

MOVEMENT STRATEGY

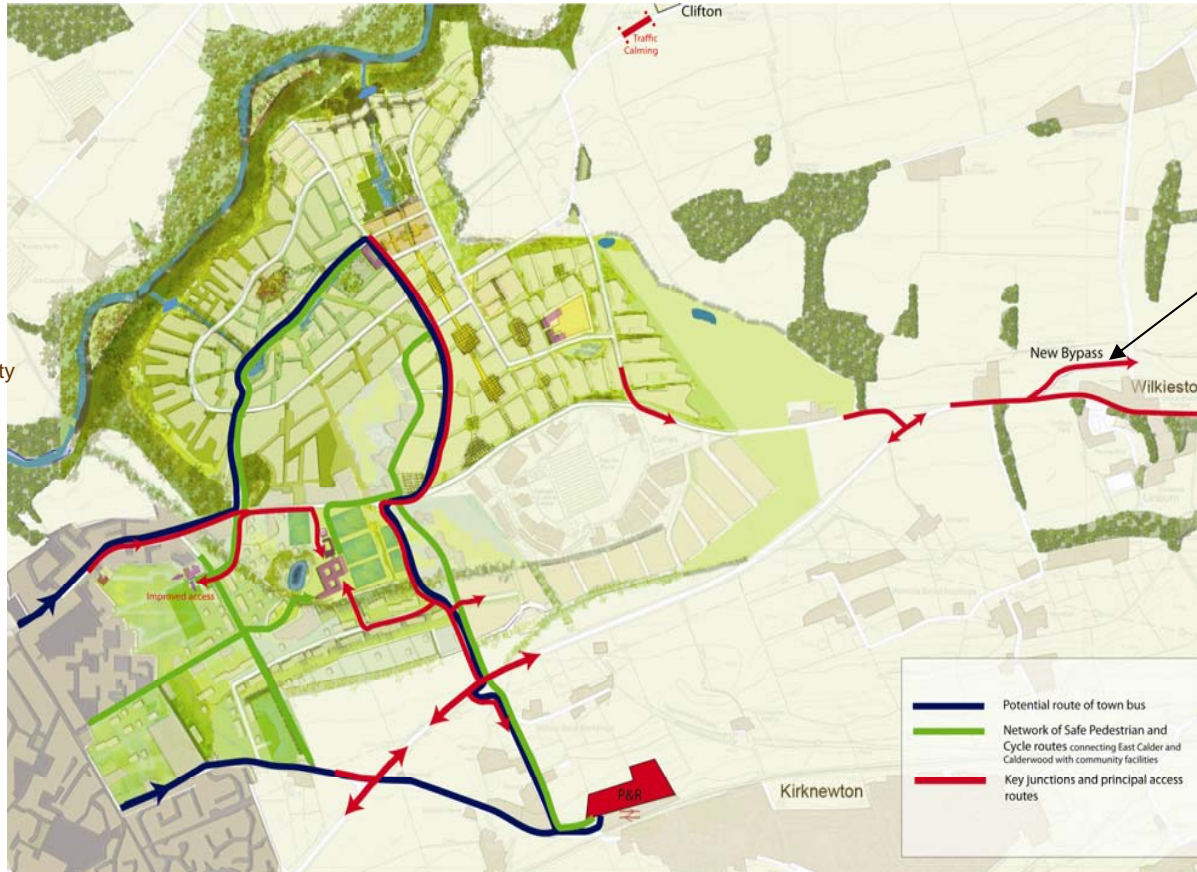
Calderwood will provide a range of improvements to public transport and transportation routes. We want Calderwood to have a low carbon foot print and every effort will be made to encourage people to leave the car in the garage



Car Parking will endeavour not to dominate the streetscape and a variety of solutions shall be adopted



Landscaped soft streets will be encouraged, creating a safe, people friendly environment



A network of safe, attractive greenways will promote walking and cycling, whilst facilitating community integration and access to schools

Proposals include a bespoke new community bus linking East Calder and Calderwood with the new Park and Ride at Kirknewton Rail Station. Providing convenient access to direct rail services to Edinburgh and Glasgow



Traffic Calming Measures introduced at Clifton cottages

A new By-Pass at Wilkieston will help alleviate traffic on the A71



Existing express bus services pass through the development area, providing links to Edinburgh and Livingston



Scenic greenways through out



Calderwood provides an ideal opportunity to establish a Car Sharing Club.